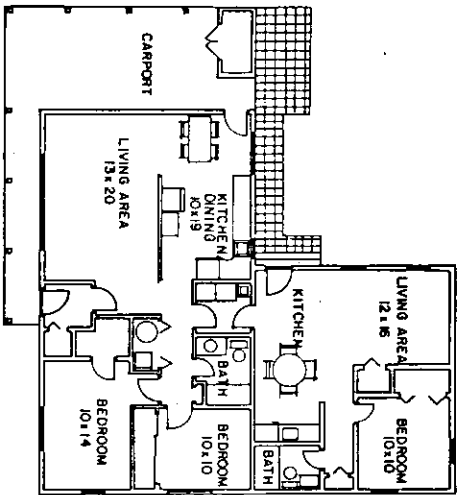
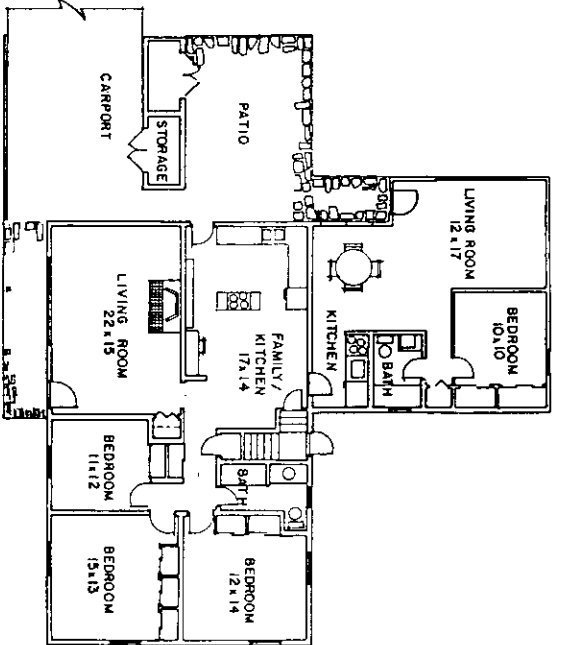


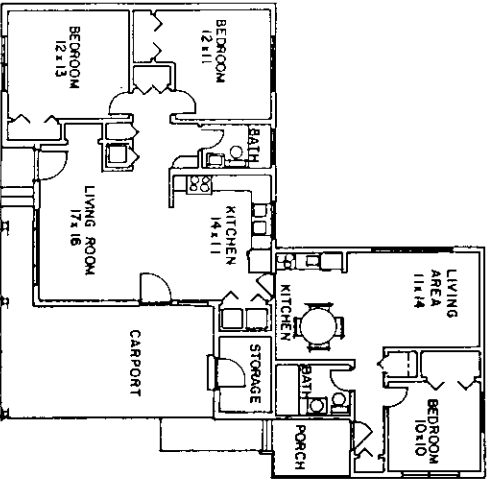
OPTION 1, USING USDA PLAN 7170



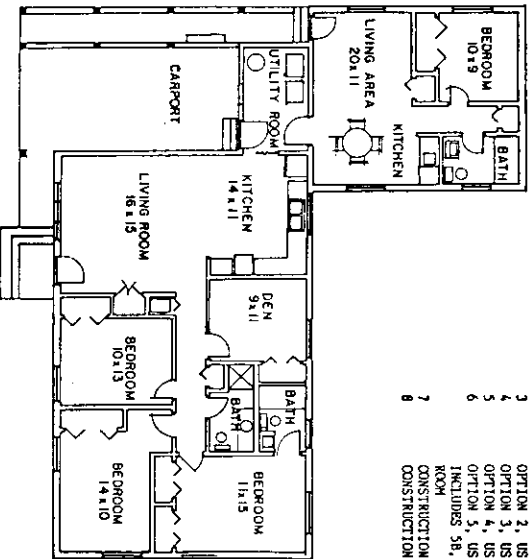
OPTION 2, USING USDA PLAN 7239



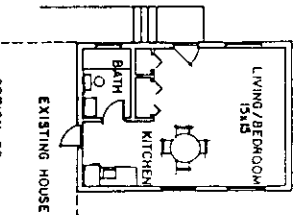
OPTION 3, USING USDA PLAN 7246



OPTION 4, USING USDA PLAN 7204



OPTION 5, USING USDA PLAN 7202, ALSO INCLUDES 5B, WITH NO SEPARATE BED-ROOM

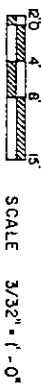


OPTION 5B EXISTING HOUSE

**CONTENTS**

SHEET #	DESCRIPTION
1	PROPOSED ADDITIONS, CONNECTING AT REAR
2	OPTION 1, USING USDA PLAN 7170
3	OPTION 2, USING USDA PLAN 7239
4	OPTION 3, USING USDA PLAN 7246
5	OPTION 4, USING USDA PLAN 7204
6	OPTION 5, USING USDA PLAN 7202, ALSO INCLUDES 5B, WITH NO SEPARATE BED-ROOM
7	CONSTRUCTION DETAILS FOR ALL ADDITIONS
8	CONSTRUCTION DETAILS FOR ALL ADDITIONS

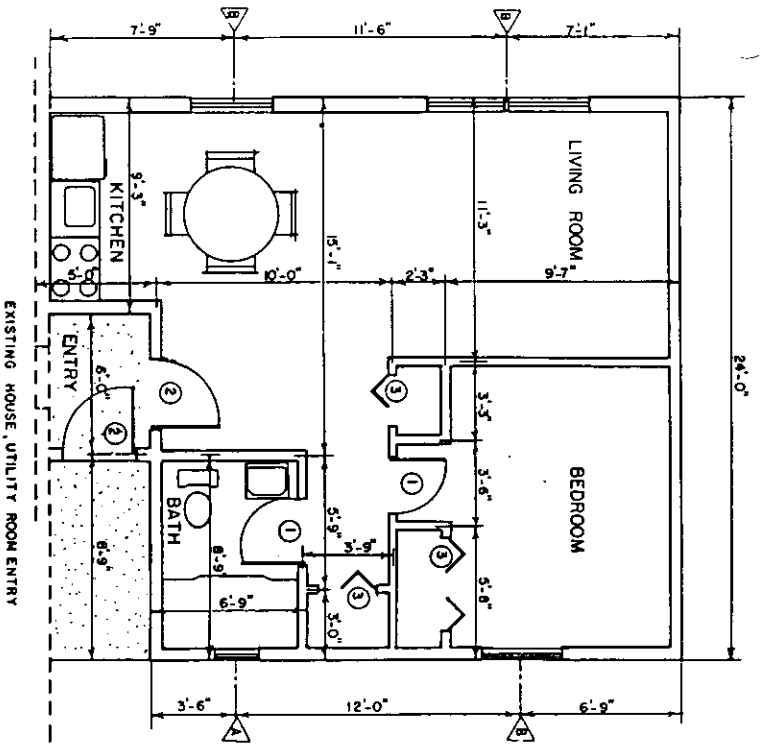
**NOTE:** PROPOSED ADDITIONS FOR INDEPENDENT LIVING, PARENT(S), OR OTHER FAMILY MEMBERS. PROVIDES BOTH ACCESS TO EXISTING HOUSE AND AN INDEPENDENT ENTRY. FEATURES INCLUDE LIVING/DINING AREA, SEPARATE BEDROOM, BATH, CLOSET SPACE, AND KITCHENETTE. OPTION 5B ALSO HAS A PLAN WITH NO SEPARATE BEDROOM. FOR PURPOSE OF ILLUSTRATION, THE ADDITIONS ARE SHOWN WITH EXISTING USDA PLANS.



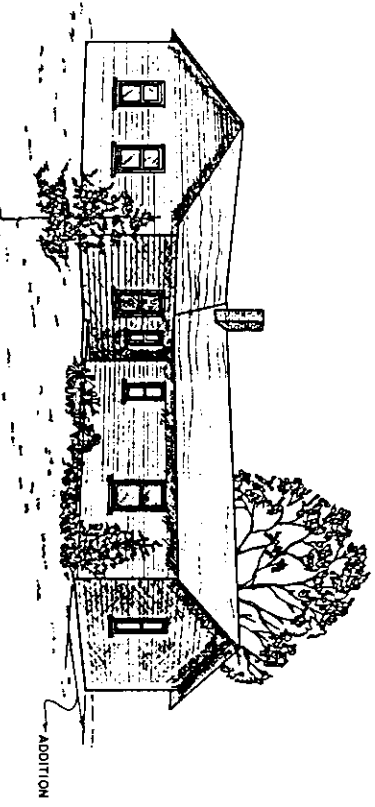
COOPERATIVE EXTENSION SERVICE  
AGRICULTURE AND HOME ECONOMICS

AND  
UNITED STATES DEPARTMENT OF AGRICULTURE COOPERATING  
REAR ADDITIONS  
FOR INDEPENDENT LIVING

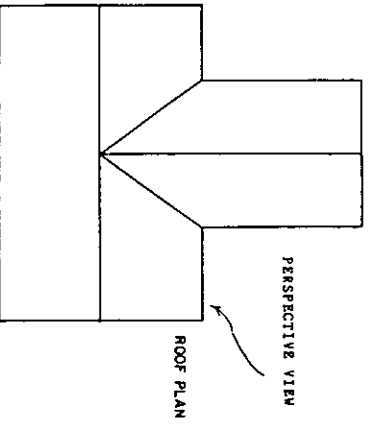
MD '87 7268 SHEET 1 OF 8



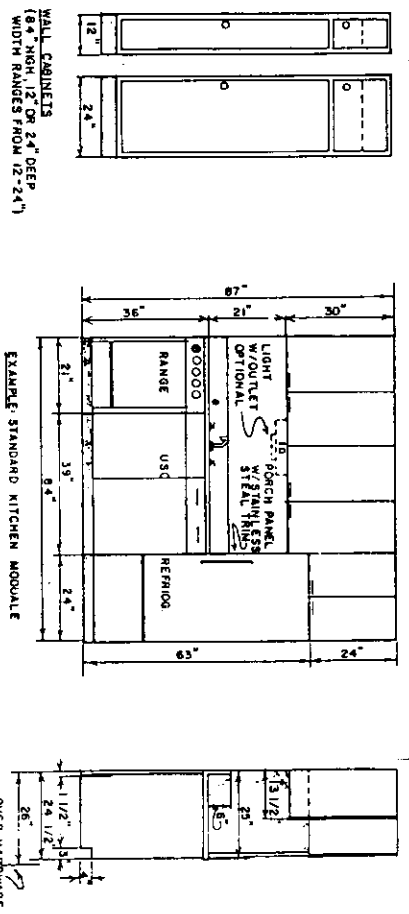
ADDITION DETAILS SCALE 1/4" = 1'-0"



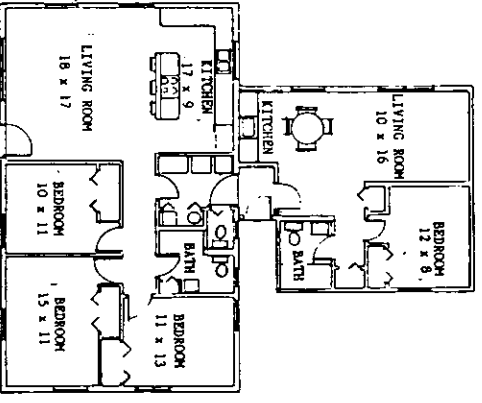
PERSPECTIVE (NO SCALE)



**\*NOTE:**  
 MODULAR KITCHENS IDEAL FOR SENIOR CITIZEN APARTMENTS. CONVENIENT OPERATION, DURABLE, FUNCTIONAL STYLING AND LOW MAINTENANCE. FEATURE ELECTRIC OR GAS RANGE, OVEN, COUNTERTOP SINK WITH GARBAGE DISPOSAL, REFRIGERATOR AND OPTIONAL UPPER CABINET. MODELS AVAILABLE UP TO 8 FEET IN WIDTH. LARGER MODELS GIVE MORE CABINET SPACE AND GREATER CUBIC FEET IN REFRIGERATOR.  
 \* FLOOR TO CEILING CABINETS CONVENIENT FOR EXTRA STORAGE.



KITCHEN DETAIL (NO SCALE)



NOTE: PROPOSED ADDITION SHOWN WITH USDA PLAN 7170

SCALE 3/32" = 1'-0"

WINDOW SCHEDULE			
MARK	SIZE	DESCRIPTION	REQ.
A	2'-0" x 3'-0"	WOOD DOUBLE HUNG	1
B	3'-6" x 4'-2"	WOOD DOUBLE HUNG	4

DOOR SCHEDULE			
MARK	SIZE	DESCRIPTION	REQ.
1	2'-6" x 6'-8"	INTERIOR HOLLOW CORE	2
2	3'-0" x 6'-8"	EXTERIOR SOLID CORE	2
3	2'-0" x 6'-8"	BI-FOLD	4

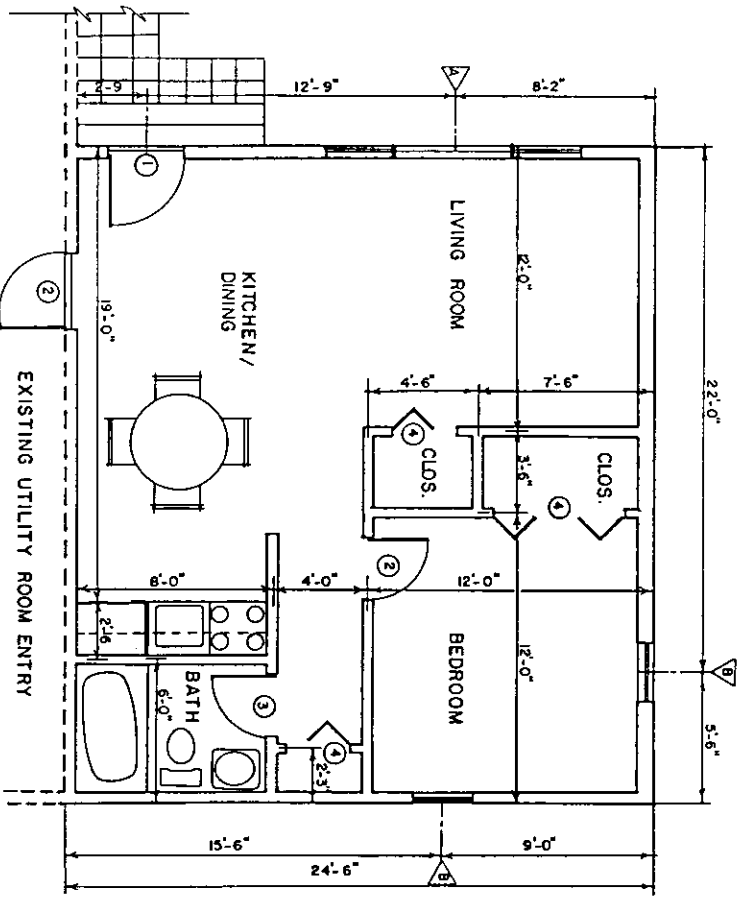
USE INSULATED GLASS FOR ALL WINDOWS

COOPERATIVE EXTENSION SERVICE  
 AGRICULTURE AND HOME ECONOMICS

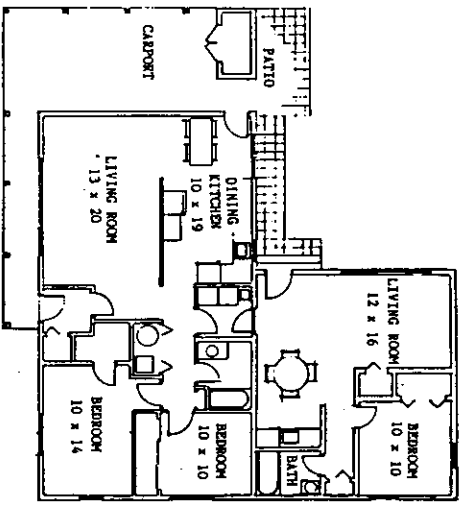
UNITED STATES DEPARTMENT OF AGRICULTURE COOPERATING

REAR ADDITIONS  
 FOR INDEPENDENT LIVING

MD '87 7268 SHEET 2 OF 8  
 OPTION I WITH USDA PLAN 7170

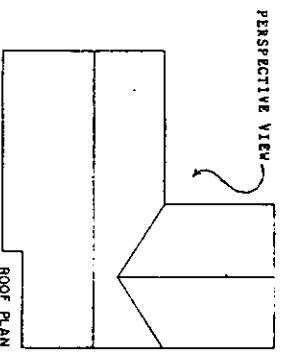


ADDITION DETAILS SCALE 1/4" = 1'-0"



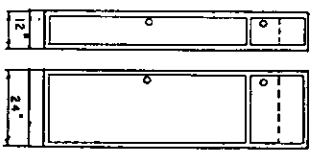
SCALE 3/32" = 1'-0"

NOTE: PROPOSED ADDITION SIMON WITH USDA PLAN 7239

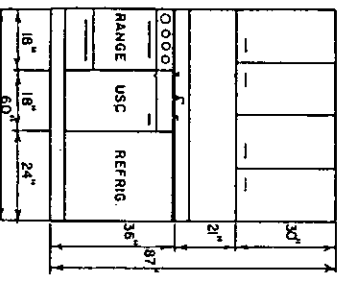


PERSPECTIVE VIEW

ROOF PLAN



SCALE 3/32" = 1'-0"



KITCHEN DETAIL (NO SCALE)

\*NOTE:

MODULAR KITCHENS IDEAL FOR SENIOR CITIZEN APARTMENTS. CONVENIENT OPERATION, DURABLE, FUNCTIONAL STYLING, AND LOW MAINTENANCE. FEATURE ELECTRIC OR GAS RANGE, OVEN, COUNTERTOP SINK WITH GARBAGE DISPOSAL, REFRIGERATOR AND OPTIONAL UPPER CABINET. MODELS AVAILABLE UP TO 8 FEET IN WIDTH. LARGER MODELS GIVE MORE CABINET SPACE AND GREATER CUBIC FEET IN REFRIGERATOR. \* FLOOR TO CEILING CABINETS CONVENIENT FOR EXTRA STORAGE.

MARK	SIZE	DESCRIPTION	FREQ.
A	2'-8" x 4'-6"	DOUBLE HUNG	2
A	5'-0" x 4'-6"	FIXED	1
B	2'-6" x 4'-0"	DOUBLE HUNG	2

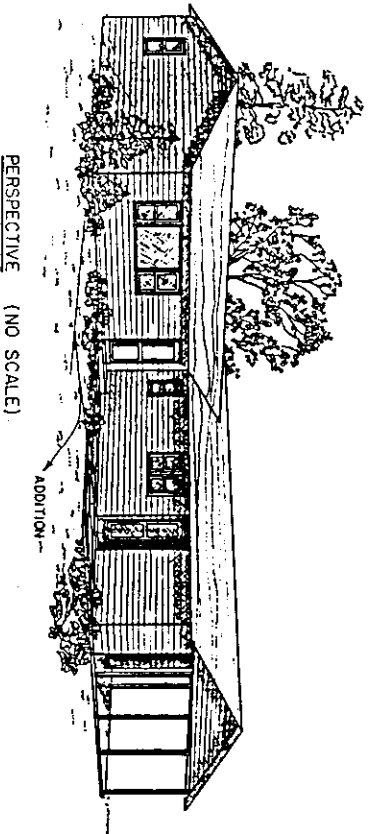
MARK	SIZE	DESCRIPTION	FREQ.
1	3'-0" x 6'-8"	EXTERIOR-FLUSH PANEL	2
2	2'-8" x 6'-8"	INTERIOR-FLUSH PANEL	1
3	2'-6" x 6'-8"	INTERIOR-FLUSH PANEL	1
4	2'-0" x 6'-8"	BI-FOLD	4

USE INSULATED GLASS FOR ALL WINDOWS

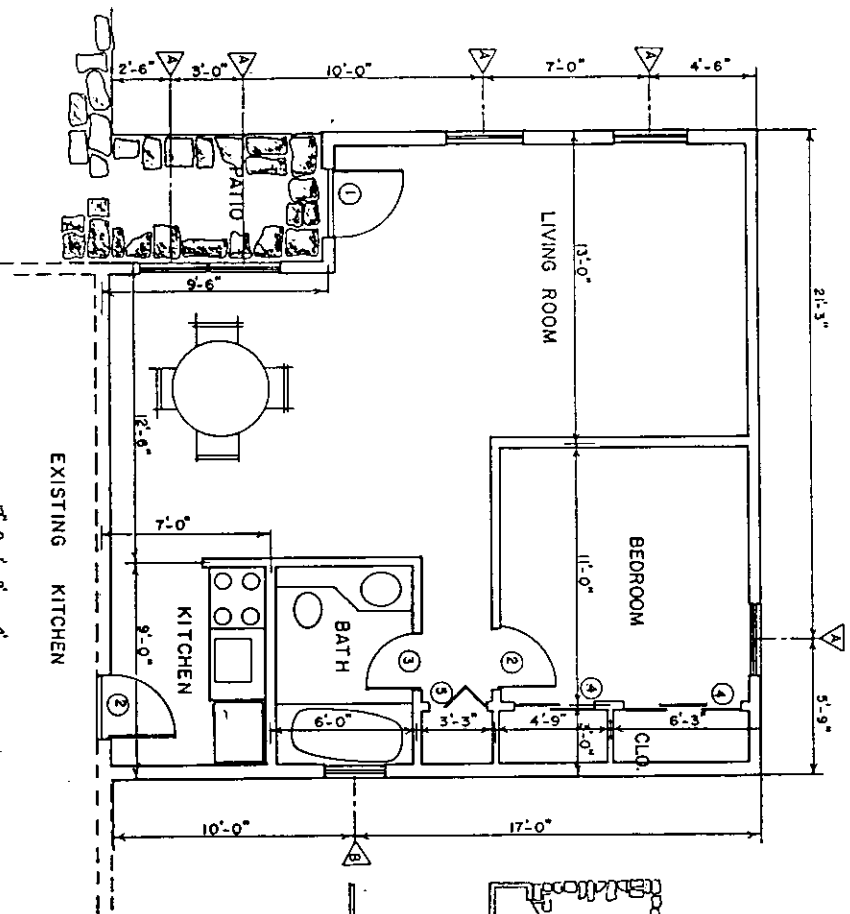
COOPERATIVE EXTENSION SERVICE  
AGRICULTURE AND HOME ECONOMICS

UNITED STATES DEPARTMENT OF AGRICULTURE COOPERATING  
AND  
REAR ADDITIONS  
FOR INDEPENDENT LIVING

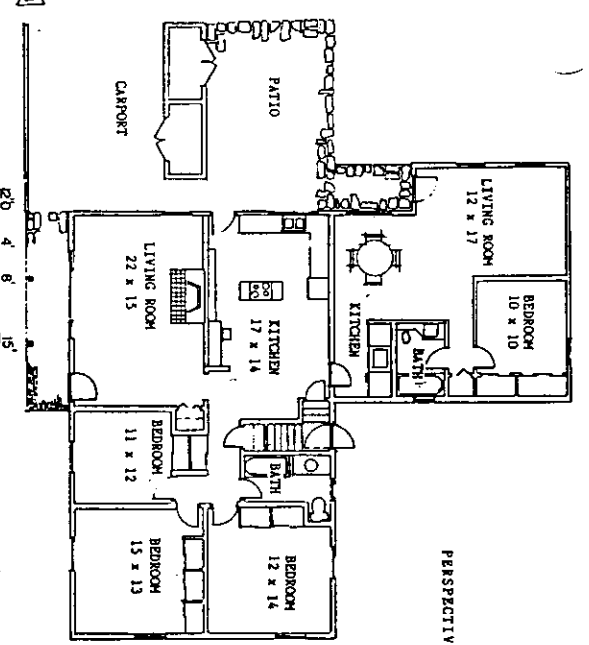
MO '87 7268 SHEET 3 OF 8  
OPTION 2 WITH USDA PLAN 7239



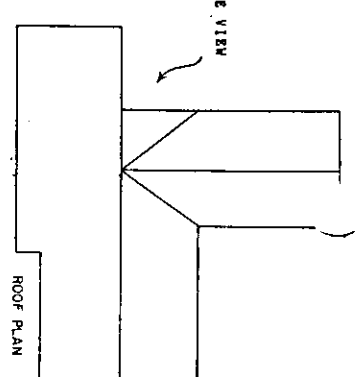
PERSPECTIVE (NO SCALE)



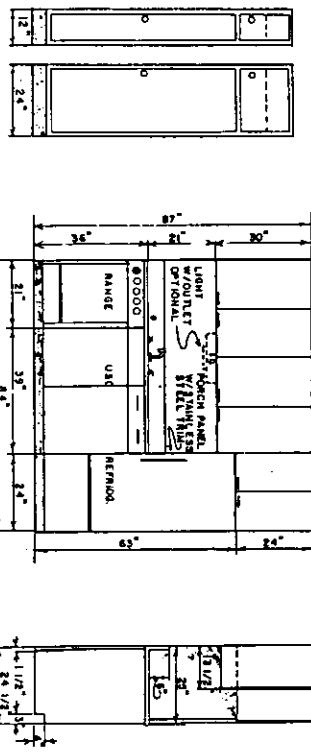
ADDITION DETAILS SCALE 1/4" = 1'-0"



PERSPECTIVE VIEW



ROOF PLAN



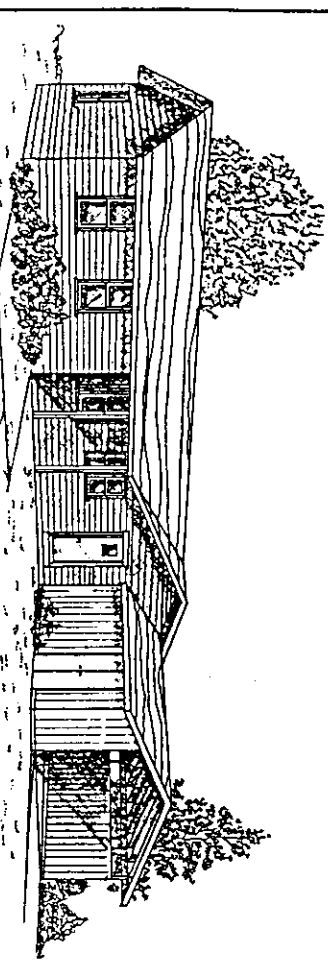
WALL CABINETS 18" HIGH, 12" OR 24" DEEP WIDTH RANGES FROM 12"-24"

ISLAND STANDARD KITCHEN MODULE

MARK	SIZE	DESCRIPTION	#REQ.
A	3'-4" x 4'-6"	DOUBLE-HUNG	5
B	2'-8" x 3'-2"	DOUBLE-HUNG	1

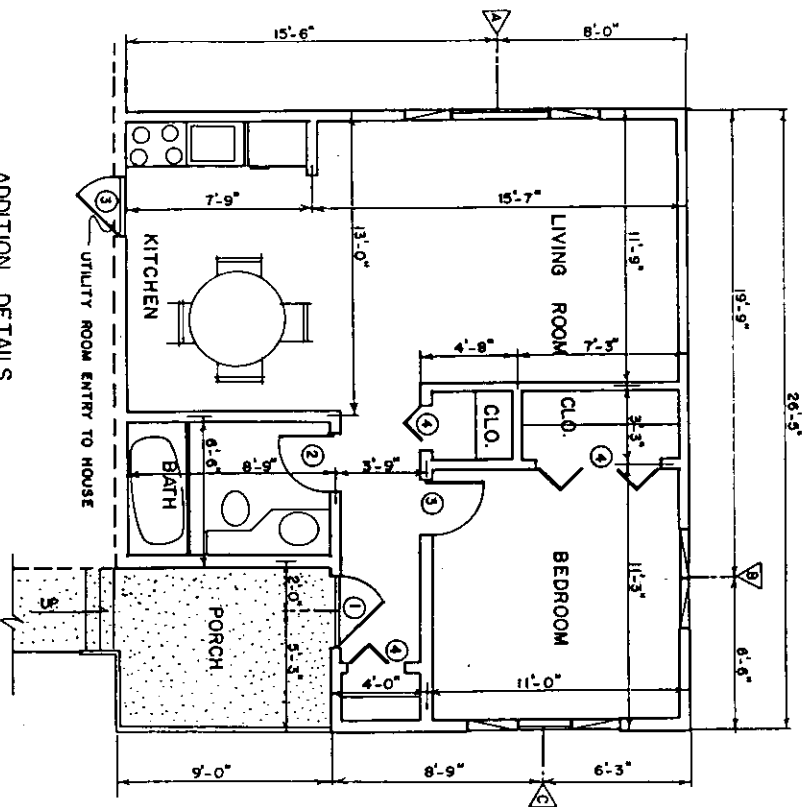
MARK	SIZE	DESCRIPTION	#REQ.
1	3'-0" x 6'-8"	PUSH EXTERIOR-GLAZED	1
2	2'-8" x 6'-8"	INTERIOR HOLLOW-CORE	2
3	2'-6" x 6'-8"	INTERIOR HOLLOW-CORE	1
4	1'-6" x 6'-8"	SLIDING WOOD DOOR	5
5	1'-0" x 6'-8"	BI-FOLD	1

\*NOTE:  
 MODULAR KITCHENS IDEAL FOR SENIOR CITIZEN APARTMENTS, CONVENIENT OPERATION, DURABLE, FUNCTIONAL, STYLING AND LOW MAINTENANCE. FEATURE ELECTRIC OR GAS RANGE OVER COUNTERTOP SINK WITH GARBAGE DISPOSAL, REFRIGERATOR AND OPTIONAL UPPER CABINET. MODULES AVAILABLE UP TO 8 FEET IN WIDTH. LARGER MODULES GIVE MORE CABINET SPACE AND GREATER CUBIC FEET IN REFRIGERATOR. \* FLOOR TO CEILING CABINETS CONVENIENT FOR EXTRA STORAGE.

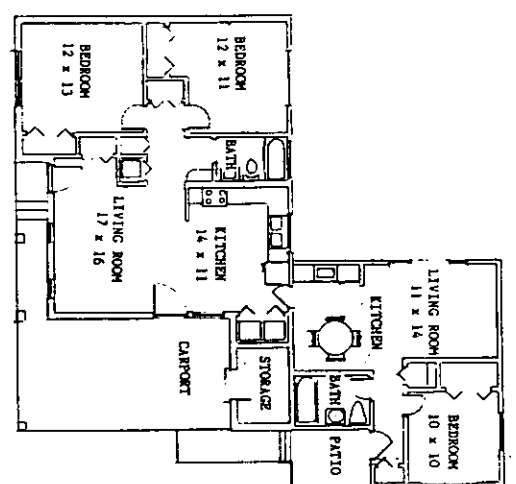


PERSPECTIVE (NO SCALE)

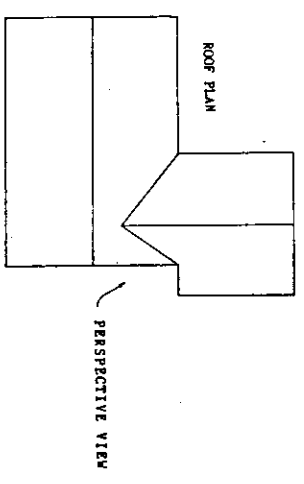
COOPERATIVE EXTENSION SERVICE  
 AGRICULTURE AND HOME ECONOMICS  
 UNITED STATES DEPARTMENT OF AGRICULTURE COOPERATING  
 AND  
 REAR ADDITIONS  
 FOR INDEPENDENT LIVING  
 MD '87 7268 SHEET 4 OF 8  
 OPTION 3 WITH USDA PLAN 7246



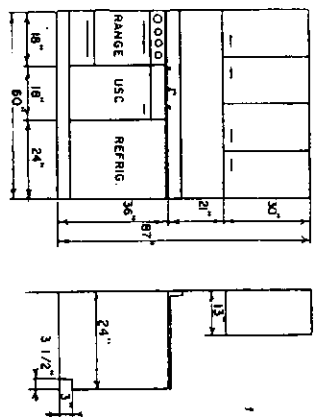
ADDITION DETAILS  
 SCALE 1/4" = 1'-0"



NOTE: PROPOSED ADDITION SHOWN WITH USDA PLAN 7204  
 SCALE 3/32" = 1'-0"



PERSPECTIVE VIEW



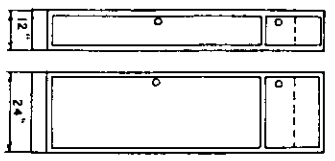
KITCHEN DETAIL (NO SCALE)

\*NOTE:  
 MODULAR KITCHENS IDEAL FOR SENIOR CITIZEN APARTMENTS, CONVENT OPERATION, DISABLE, FUNCTIONAL STYLING, AND LOW MAINTENANCE. FEATURE ELECTRIC OR GAS RANGE, REFRIGERATOR AND OPTIONAL UPPER CABINET. DISTROPS, AVAILABLE UP TO 8 FEET IN WIDTH. LARGER MODELS GIVE MORE CABINET SPACE AND GREATER CUBIC FEET IN REFRIGERATION. FLOOR TO CEILING CABINETS COMMENT FOR EXTRA STORAGE.

USE INSULATED GLASS FOR ALL WINDOWS

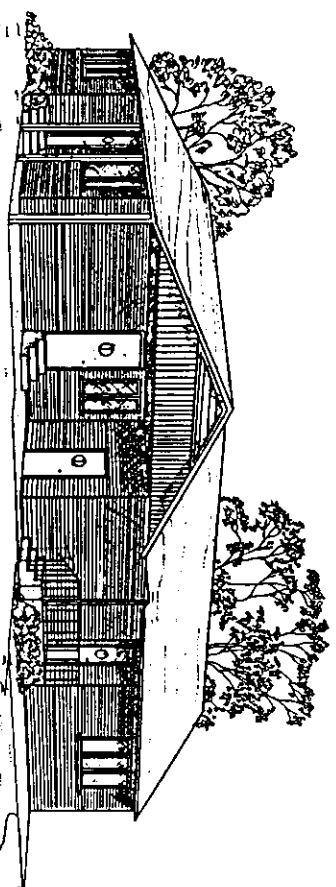
WINDOW SCHEDULE		
MARK	SIZE	DESCRIPTION
A	8'-0" x 4'-0"	WOOD CASPIMENT
B	4'-3" x 3'-0"	WOOD CASPIMENT
C	3'-0" x 4'-0"	WOOD CASPIMENT

WALL CABINETS  
 (8" HIGH, 1/2" DEEP,  
 WIDTH RANGES FROM 12" TO 24")



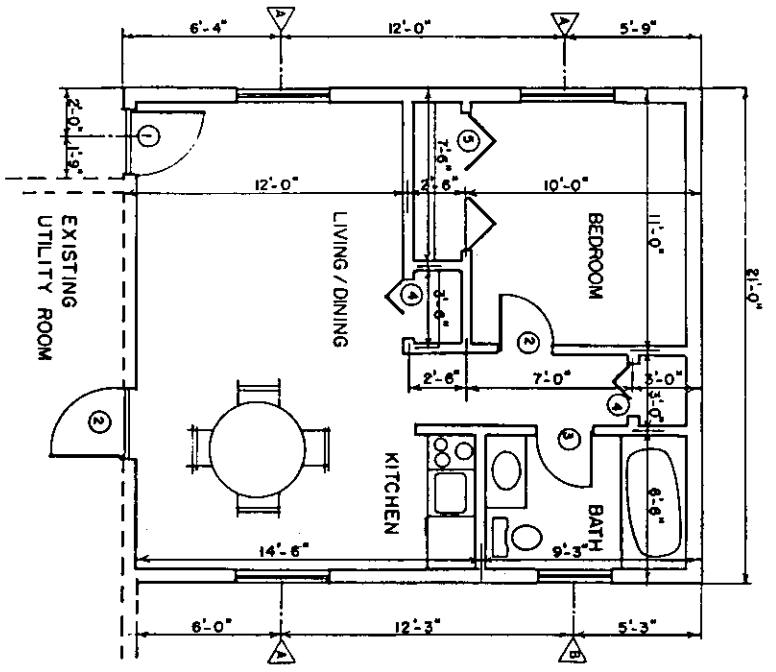
DOOR SCHEDULE		
MARK	SIZE	DESCRIPTION
1	3'-0" x 6'-8"	EXTERIOR SOLID CORE
2	2'-6" x 6'-8"	INTERIOR HOLLOW CORE
3	2'-8" x 6'-8"	INTERIOR HOLLOW CORE
4	1'-0" x 6'-8"	BI-FOLD

USE INSULATED GLASS FOR ALL WINDOWS

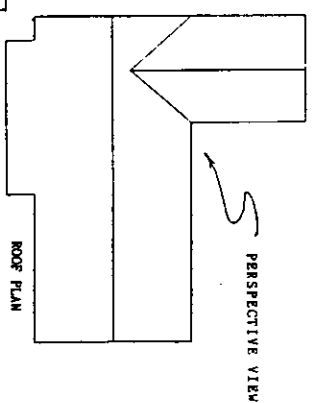
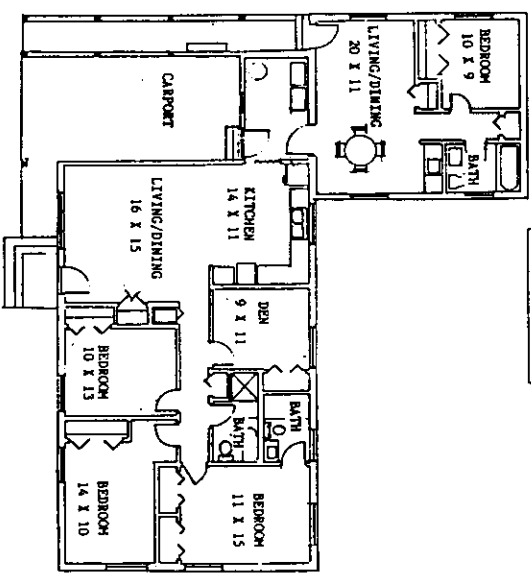


PERSPECTIVE (NO SCALE)

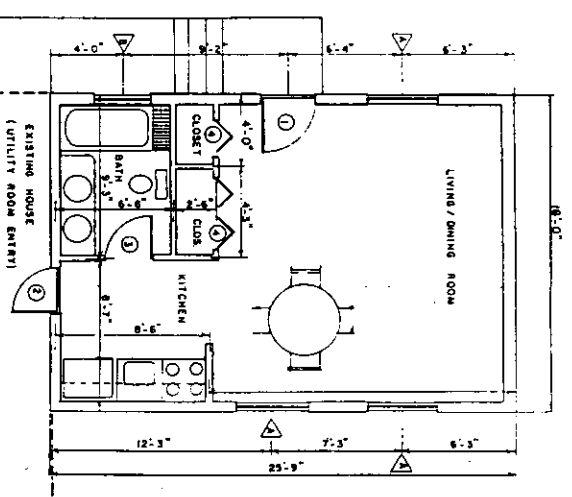
COOPERATIVE EXTENSION SERVICE  
 AGRICULTURE AND HOME ECONOMICS  
 UNITED STATES DEPARTMENT OF AGRICULTURE COOPERATING  
 AND  
 REAR ADDITIONS  
 FOR INDEPENDENT LIVING  
 MD 87 7268 SHEET 5 OF 8  
 OPTION 4 WITH USDA PLAN 7204



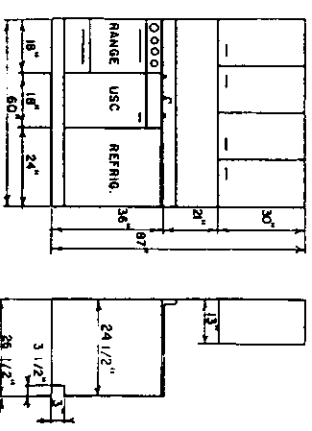
ADDITION DETAILS 3  
SCALE 1/4" = 1'-0"



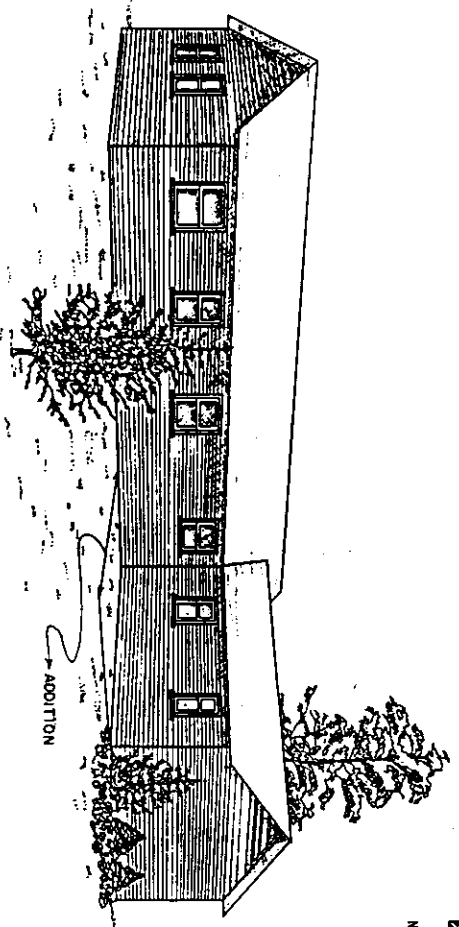
PERSPECTIVE VIEW



ADDITION DETAILS 3A  
SCALE 3/16" = 1'-0"



KITCHEN DETAIL



REAR PERSPECTIVE (NO SCALE)

WINDOW SCHEDULE		
MARK	SIZE	DESCRIPTION
A	4'-0" x 4'-0"	DOUBLE-HUNG
B	3'-0" x 4'-0"	DOUBLE-HUNG
		#REQ. 1

DOOR SCHEDULE		
MARK	SIZE	DESCRIPTION
1	3'-0" x 6'-8"	EXTERIOR WOOD SOLID CORE
2	2'-8" x 6'-8"	INTERIOR WOOD HOLLOW CORE
3	2'-6" x 6'-8"	INTERIOR WOOD HOLLOW CORE
4	1'-0" x 6'-8"	BI-FOLD
5	1'-6" x 6'-8"	BI-FOLD
		#REQ. 2

NOTE: PROPOSED ADDITION SHOWN WITH USDA PLAN 7202

\*NOTE:  
 MODULAR KITCHENS IDEAL FOR SENIOR CITIZEN APARTMENTS, CONVENIENT OPERATION, DURABLE, FUNCTIONAL STYLING, AND LOW MAINTENANCE. FEATURE ELECTRIC OR GAS RANGE, OVEN, COUNTERTOP, SINK WITH GARBAGE DISPOSAL, REFRIGERATOR AND OPTIONAL UPPER CABINET. MODELS AVAILABLE UP TO 8 FEET IN WIDTH. LARGER MODELS GIVE MORE CABINET SPACE AND GREATER CUBIC FEET IN REFRIGERATOR.  
 \* FLOOR TO CEILING CABINETS CONVENIENT FOR EXTRA STORAGE.

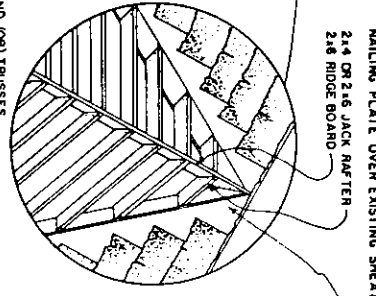
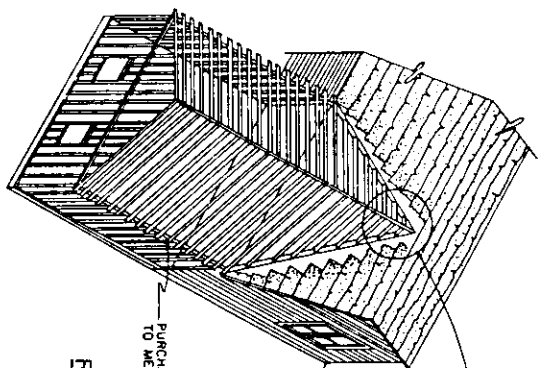
COOPERATIVE EXTENSION SERVICE  
 AGRICULTURE AND HOME ECONOMICS

UNITED STATES DEPARTMENT OF AGRICULTURE COOPERATING

REAR ADDITIONS  
 FOR INDEPENDENT LIVING

MD '87 7268 SHEET 6 OF 8  
 OPTION 5/5B WITH USDA PLAN 7202

USE INSULATED GLASS FOR ALL WINDOWS



**ROOF FRAMING DETAIL**  
NOT TO SCALE

REMOVE EXISTING ROOFING TO PLACE 2x4 NAILING PLATE OVER EXISTING SHEATHING  
2x4 OR 2x6 JACK RAFTER  
2x4 RIDGE BOARD

PURCHASE RAFTERS AND (OR) TRUSSES TO MEET LOCAL SNOW LOAD CRITERIA

COMMERCIAL TRUSS OR RAFTER  
2x5 LB ASPHALT SHINGLES OVER 1/2" BUILDING PAPER AND 1/2" PLYWOOD SHEATHING  
1-1/2" AIRSPACE  
R-28 INSULATION  
2x4 BLOCKING  
1x6 FASCIA

INTERIOR FINISH  
2x4, 16" OC STUD WALL  
EXISTING INSULATION MAY BE REMOVED TO ALLOW FOR ELECTRICAL AND PLUMBING CONNECTIONS  
EXISTING SHEATHING MAY BE LEFT OR REMOVED

2x4 SILL  
1/2" ANCHOR BOLT  
4" CONCRETE SLAB REINFORCED W/ #5, #10 GA W/M OVER V/B AND 4" MIN GRAVEL  
GRADE  
CARRY FOOTING TO FIRM BASE  
BELOW FROST LINE

COMMERCIAL TRUSS OR RAFTER  
2x5 LB ASPHALT SHINGLES OVER 1/2" BUILDING PAPER AND 1/2" PLYWOOD SHEATHING  
1-1/2" AIRSPACE  
2x4 BLOCKING  
1x6 FASCIA  
3/8" EXT PLYWOOD SOFFIT W/ 1/2" CONT SCREENED VENT  
1/2" EXT SHEATHING  
BRICK VENEER  
AIRSPACE  
R-11 INSULATION W/V/B

EXISTING INSULATION MAY BE REMOVED TO ALLOW FOR ELECTRICAL AND PLUMBING CONNECTIONS

REMOVE EXISTING EXTERIOR BRICK TO ALLOW FOR SLAB CONSTRUCTION AND INTERIOR WALL FINISH

2x4 SILL  
1/2" ANCHOR BOLT  
GRADE  
4" CONCRETE SLAB REINFORCED W/ #5, #10 GA W/M OVER V/B AND 4" MIN GRAVEL  
2" RIGID INSULATION  
EXISTING CONSTRUCTION

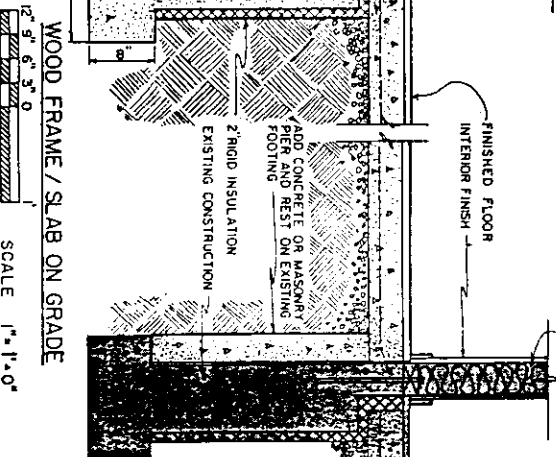
**BRICK VENEER / SLAB ON GRADE**  
SCALE 1"=1'-0"

INTERIOR FINISH  
4" CONCRETE SLAB REINFORCED W/ #5, #10 GA W/M OVER V/B AND 4" MIN GRAVEL

1/2" REINFORCING ROD TIES 4'-0" OC DRILL 4" INTO EXISTING FOUNDATION WALL. RODS SHOULD EXTEND WITHIN 1/2" OF OUTSIDE OF ADDITION FOUNDATION  
EXISTING CONSTRUCTION

NOTE:  
WHEN EXISTING FOUNDATION AND FOOTING CANNOT BE USED, TIE THE ADDITION FOUNDATION AS SHOWN

**WOOD FRAME / SLAB ON GRADE**  
SCALE 1"=1'-0"



COOPERATIVE EXTENSION SERVICE  
AGRICULTURE AND HOME ECONOMICS

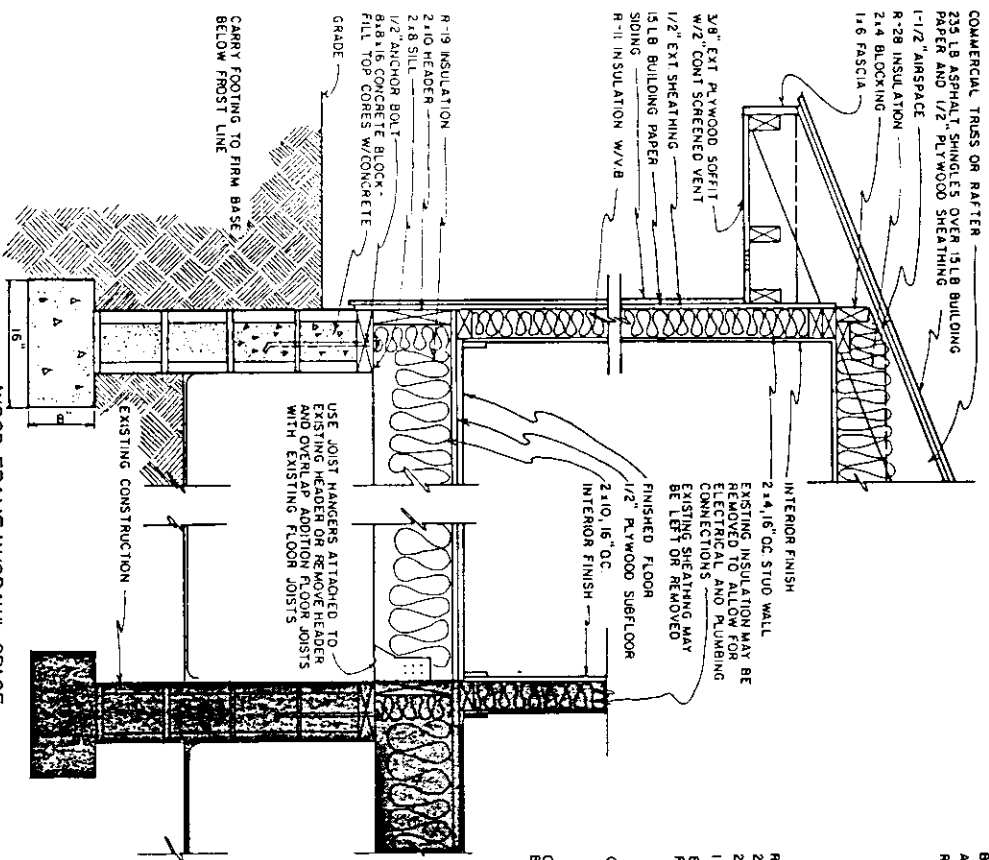
UNITED STATES DEPARTMENT OF AGRICULTURE COOPERATING

REAR ADDITIONS  
FOR INDEPENDENT LIVING

MO '87 7268 SHEET 7 OF 8

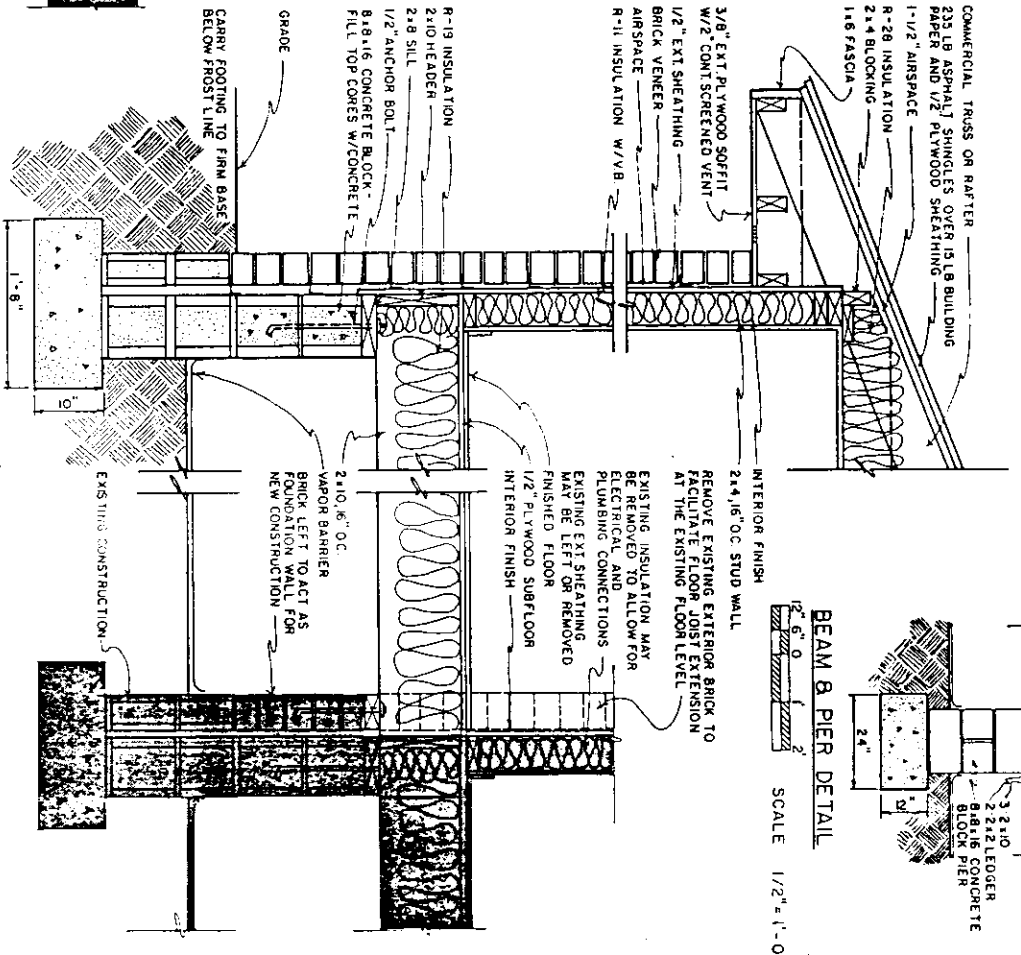
Column/JUNCTION CHECK LIST

1. CHECK LOCAL BUILDING CODE AND LOAN COMPANY CRITERIA. PURCHASE TRUSSES TO MEET LOCAL SNOW LOAD CRITERIA.
2. ADEQUATELY NAIL AND ANCHOR JOINTS.
3. DOUBLE JOISTS UNDER TRUSS AND OTHER HEAVY LOADS.
4. SHEATH CORNERS WITH 1/2" PLYWOOD OR HIGH DENSITY FIBERBOARD OR USE DIAGONAL BRACING.
5. USE EXTERIOR GUIDED PLYWOOD WHEREVER IT MAY BE WETTED DURING OR AFTER CONSTRUCTION.
6. PRESSURE TREAT ALL WOOD WITH GROUND CONTACT AND PROVIDE OTHER NEEDED TERMITE CONTROL.
7. R VALUES DEPEND ON LOCAL CLIMATE AND FUEL COSTS.
8. PROVIDE 1 SQ FT OF ATTIC VENT OPENINGS FOR EACH 130 SQ FT OF CEILING.
9. WEATHERIZE ALL OPENINGS AND JOINTS.



WOOD FRAME W/CRAWL SPACE

1/2" 9" 6" 3" 0" SCALE 1" = 1'-0"



BRICK VENEER W/CRAWL SPACE OR BASEMENT

1/2" 9" 6" 3" 0" SCALE 1" = 1'-0"

BEAM & PIER DETAIL  
1/2" 6" 0" SCALE 1/2" = 1'-0"

COOPERATIVE EXTENSION SERVICE  
AGRICULTURE AND HOME ECONOMICS

UNITED STATES DEPARTMENT OF AGRICULTURE COOPERATING  
AND  
FOR INDEPENDENT LIVING  
REAR ADDITIONS  
MD '87 7268 SHEET 8 OF 8